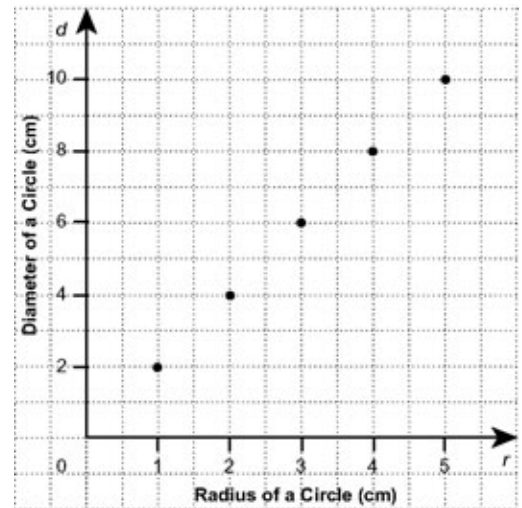


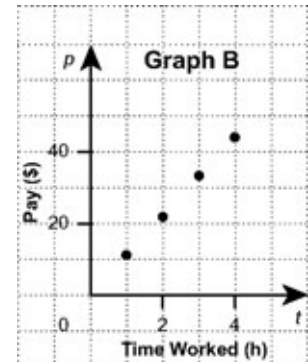
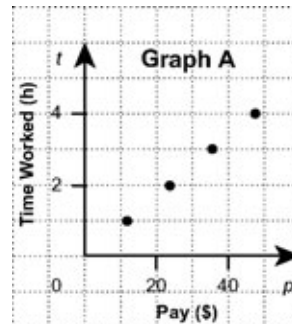
## Section 9.1 Extra Practice

1. **a)** Make a table of values from the graph.
- b)** What is the diameter of a circle with a radius of 8 cm?
- c)** What is the radius of a circle with a diameter of 22 cm?
- d)** Is it reasonable to include a point on the graph for  $r = 4.5$  cm? Explain.



2. Nikki is making a graph of the data in the table of values:

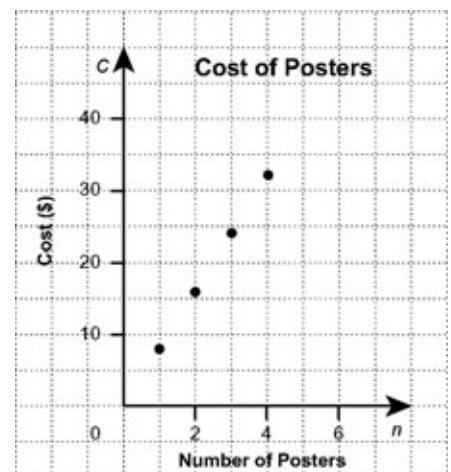
Time Worked, $t$ (h)	Pay, $P$ (\$)
1	11
2	22
3	33
4	44



Does one of the graphs show the data from the table? Explain.

3. **a)** Copy the table of values into your notebook. Look at the points on the graph to complete the table of values.

Number of Posters, $n$	Cost, $C$ (\$)
1	8
2	16



- b)** What would be the cost of six posters?
- c)** Would it be reasonable to have points between the ones on the graph? Explain.